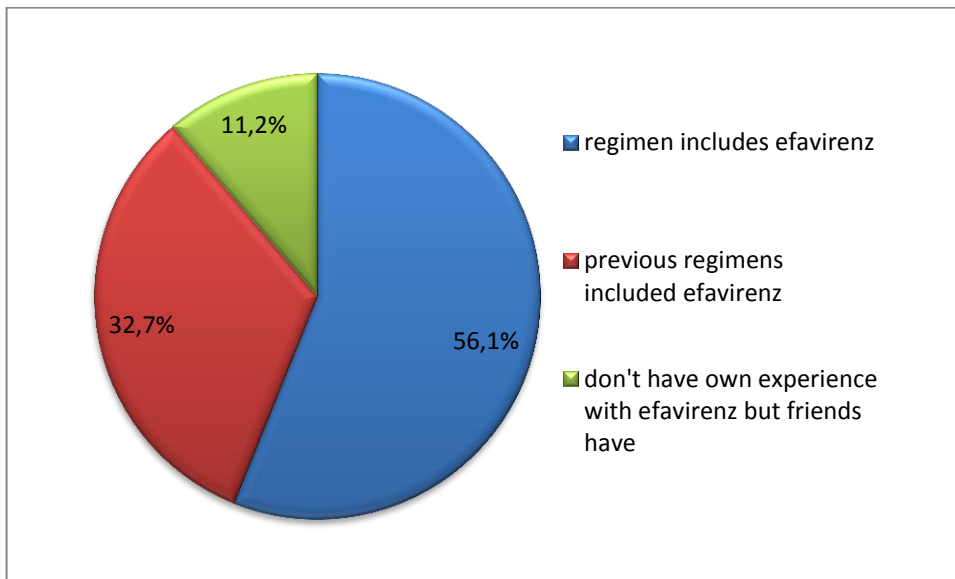
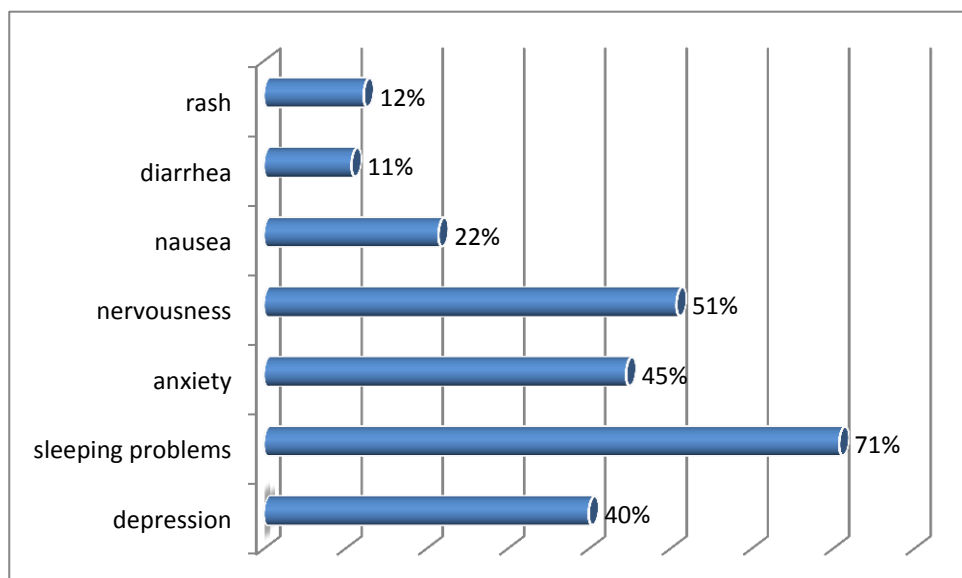


Post Results of the survey conducted among people taking efavirenz¹

1. 100 people were involved in this survey, 88,8% of whom the regimen of treatment included efavirenz.

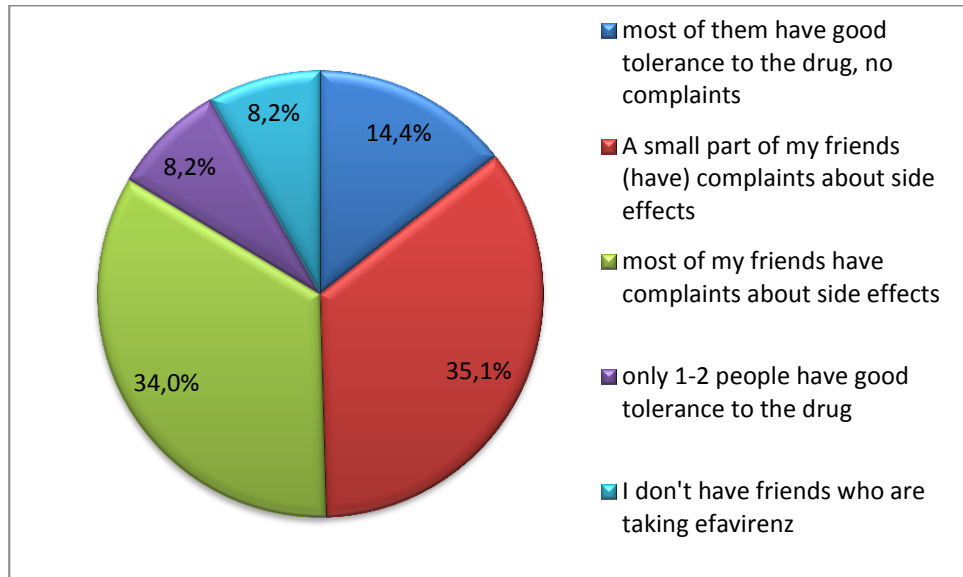


2. The majority of respondents (83.9%) indicated that their physician or a peer counselor explained how to take the drug in the proper way to reduce side effects. Most respondents said that the most frequent recommendations were to take before bedtime and to take after eating a low-fat meal. Several respondents noted that the consultation on the issue of taking this drug was brief and incomplete (not explained that the drug is not recommended to take during pregnancy etc.).
3. The most common side effects were problems with sleeping (71% of respondents) and anxiety (51% of respondents). Also dizziness, intoxication, drowsiness and lethargy reactions, memory problems and numbness of body parts were observed.

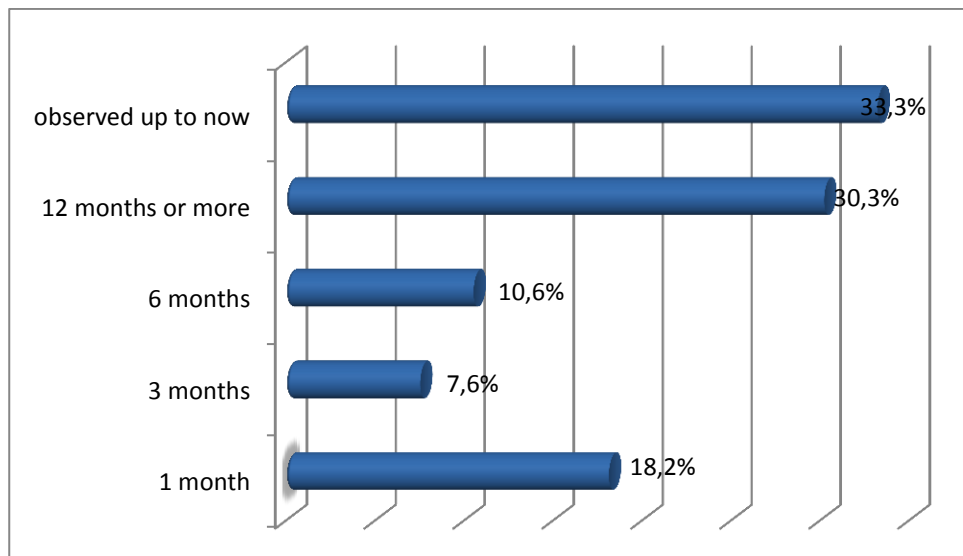


¹ Survey <https://www.surveymonkey.com/s/2XPFZYG> was conducted by ITPCru in November 2013 among PLWH community representatives in Eastern Europe and Central Asia

People without experience of taking efavirenz but whom friends have experience in taking the drug took part in the survey. According to the information received, 69,1% of them have a complaint about the side effects, 60% of these side effects were observed for three months or more (sleep disturbance, anxiety, depression, alcohol intoxication, problems with concentration and memory).

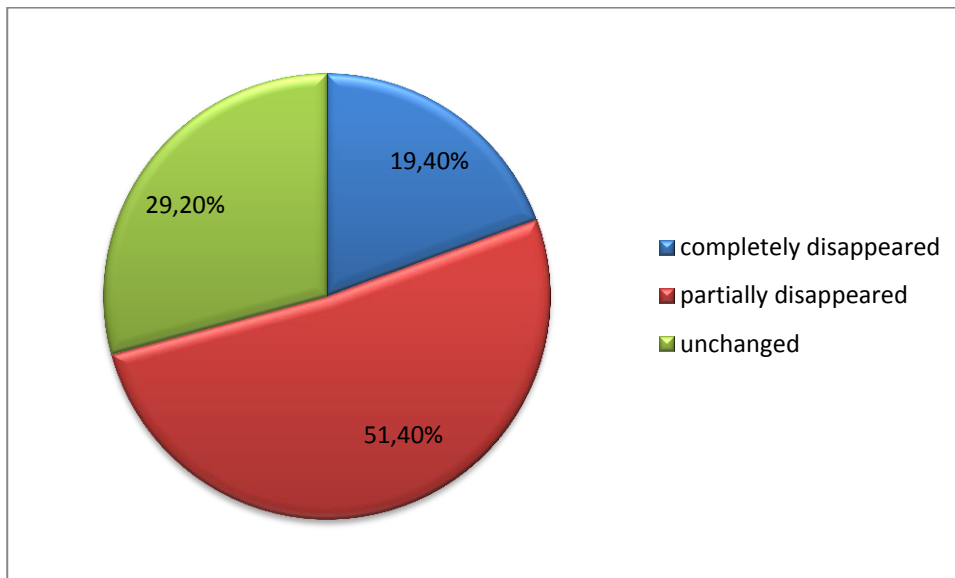


4. 30% of respondents had side effects which were observed for more than 12 months from the beginning of treatment, 33,3% of them have side effects observed so far (from 2 to 7 years).

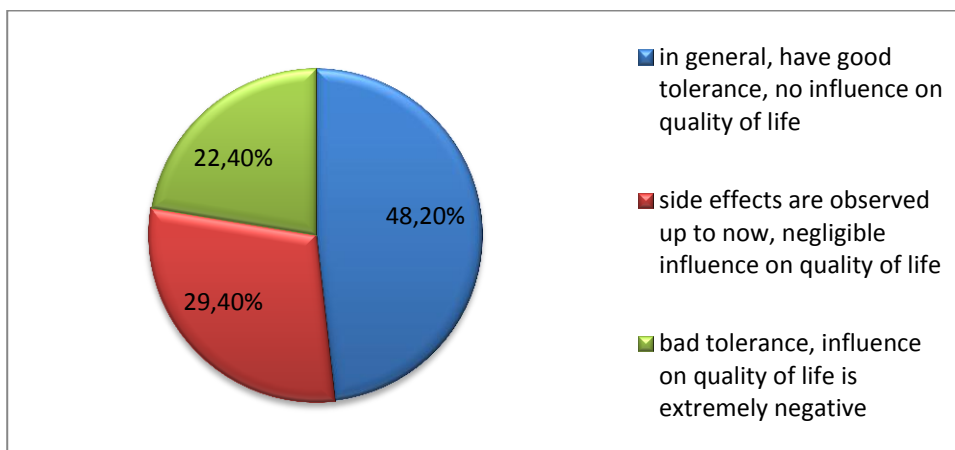


5. Also comments were received that when changing the drug manufacturer and maintaining the new treatment regimen for 3 months, then side effects decrease². But some respondents noted that their side effects still remained almost unchanged.

² Comments were received that the incidence of side effects associated with the manufacturer of the drug, in particular, frequent complaints are noticed in regards to Efcure (manufacturer Emcure).



6. Almost 50% of the respondents noted that in general the drug was well tolerated and had no effect on quality of life.



7. Respondents indicated the following problems when taking efavirenz: increased side effects after taking alcohol (over 60%), false-positive test for cannabinoids (almost half of respondents); and also indicated changes of dosage in substitution therapy programs.
8. If given the opportunity to take another drug instead of efavirenz, 67% of respondents answered positively. The vast majority of respondents would prefer a drug with less severe side effects.